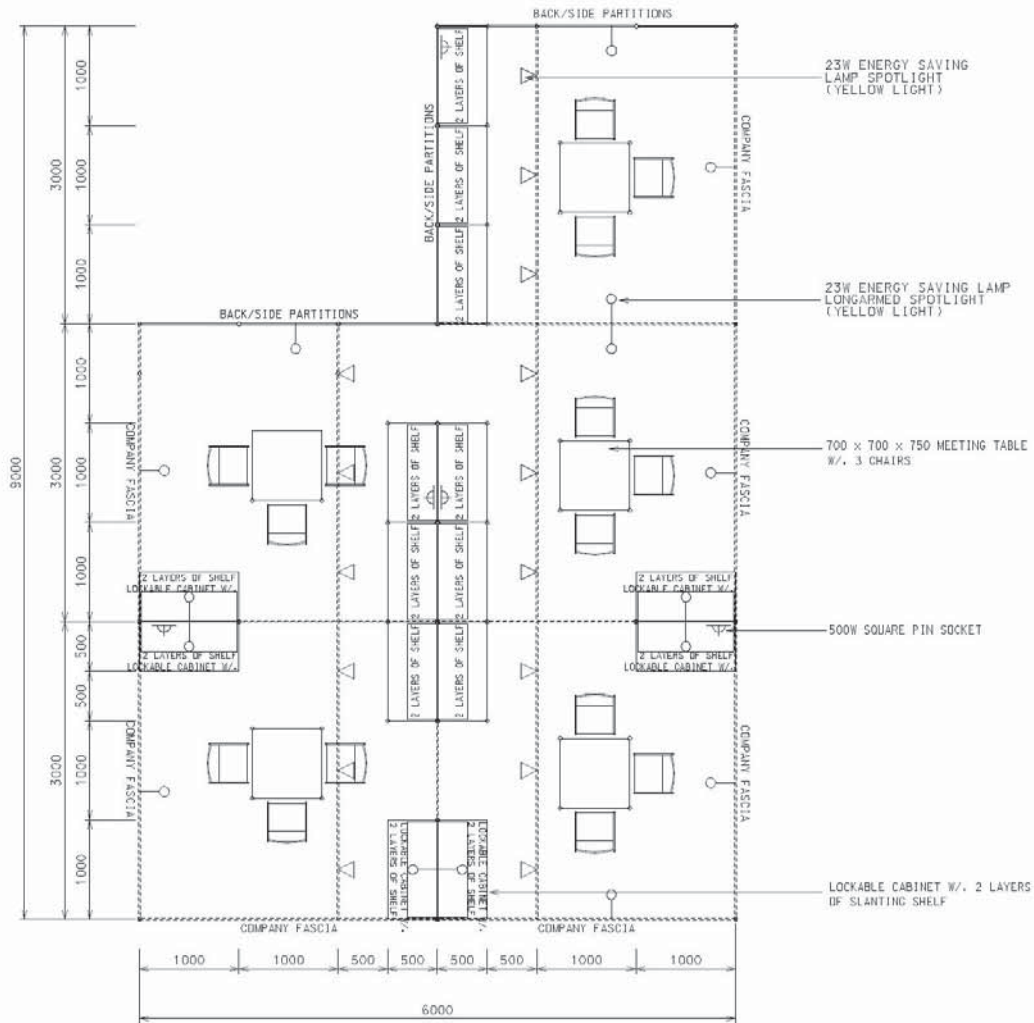


45 Sq.m. Odd Size Standard Booth (A)

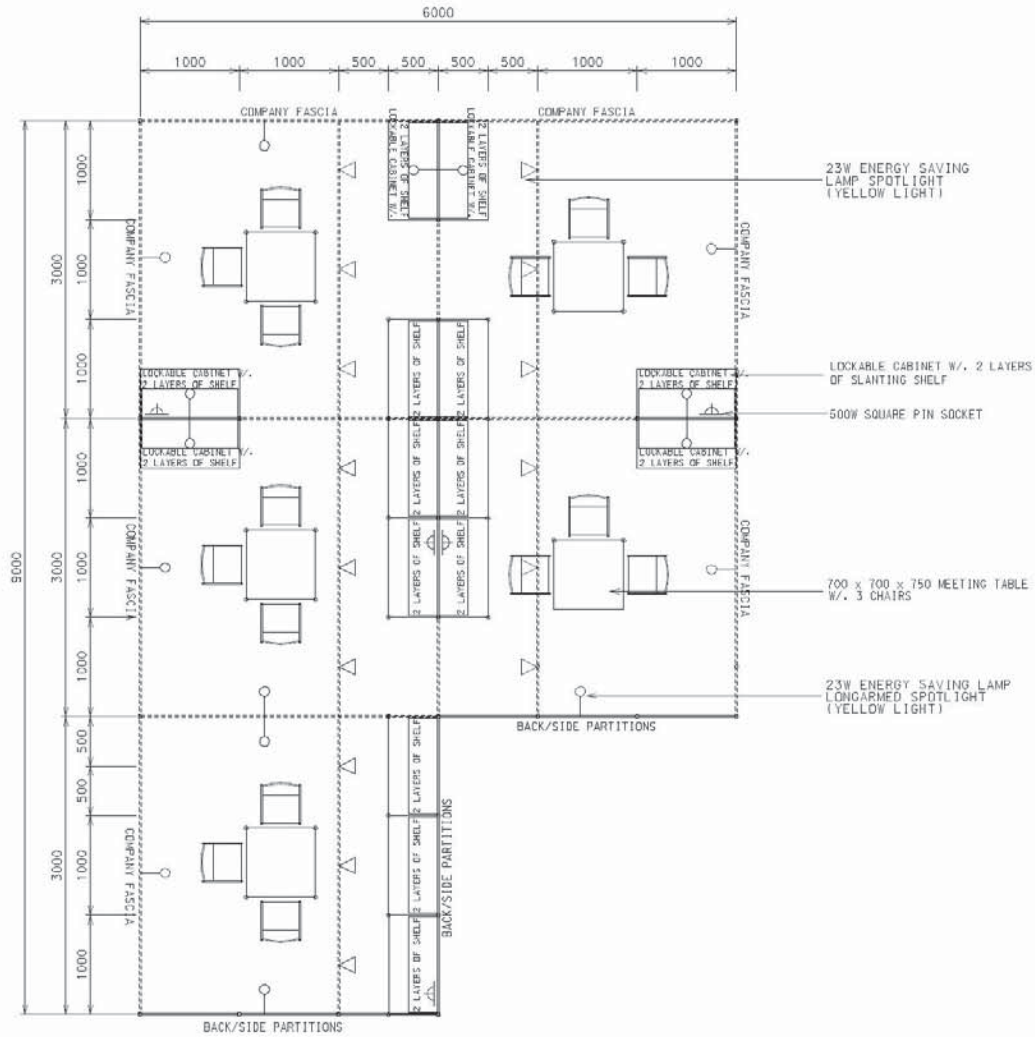
45平方米標準攤位 (A)



| BOOTH SPECIFICATIONS | | QTY. |
|-------------------------------|---|------|
| | 1000W x 500D x 750H CABINET | 15 |
| | 3000W x 300D SLOPE WOODEN DISPLAY SHELF | 6 |
| | 1000W x 300D SLOPE WOODEN DISPLAY SHELF | 12 |
| | 23W ENERGY SAVING LAMP SPOTLIGHT(YELLOW LIGHT) | 15 |
| | 23W ENERGY SAVING LAMP LONGARMED SPOTLIGHT (YELLOW LIGHT) | 15 |
| | 700W x 700D x 750H MEETING TABLE | 5 |
| | BLACK LEATHER CHAIR | 15 |
| | CEILING BEAM | 15M |
| | 500W SOCKET | 5 |
| RUBBISH BIN & CARPET (45sqm.) | | |

45 Sq.m. Odd Size Standard Booth (A)

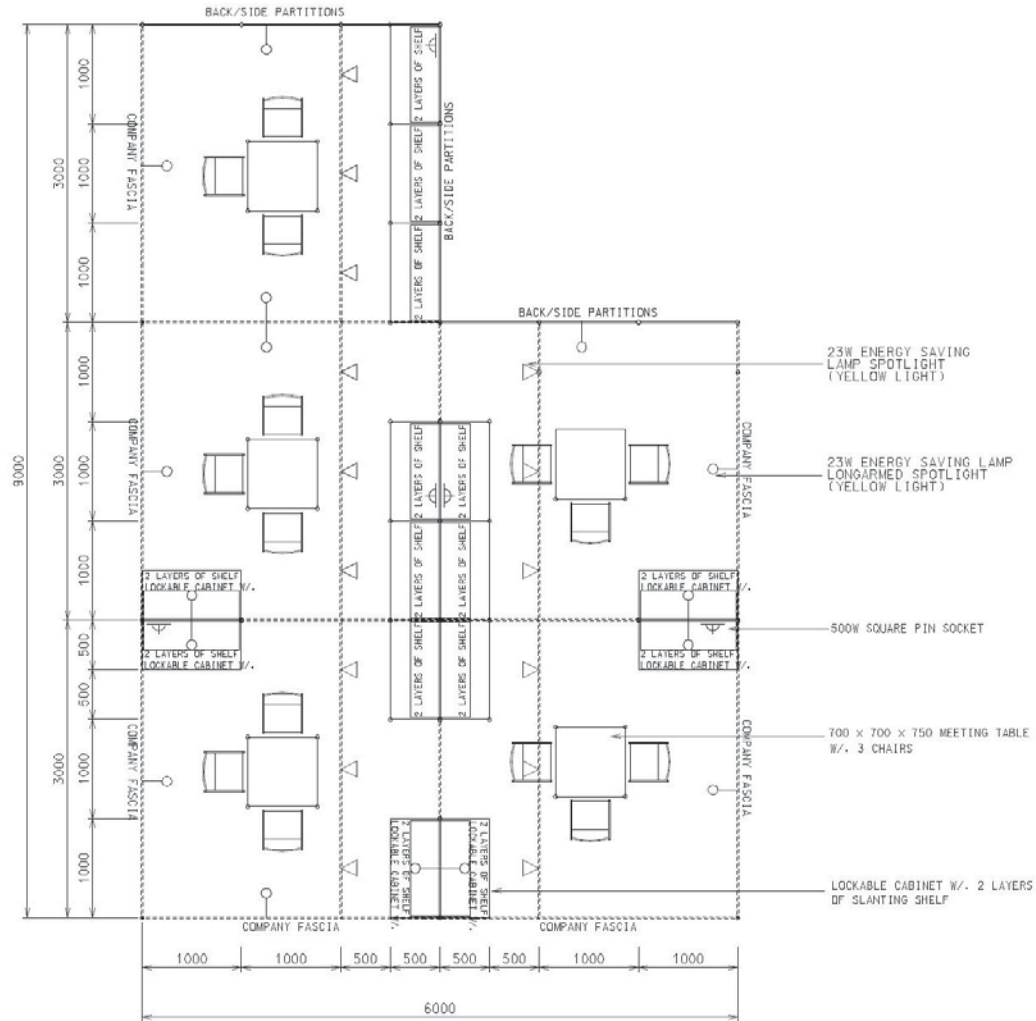
45平方米標準攤位 (A)



| BOOTH SPECIFICATIONS | | QTY. |
|----------------------|---|------|
| | 1000W x 500D x 750H CABINET | 15 |
| | 3000W x 300D SLOPE WOODEN DISPLAY SHELF | 6 |
| | 1000W x 300D SLOPE WOODEN DISPLAY SHELF | 12 |
| | 23W ENERGY SAVING LAMP SPOTLIGHT(YELLOW LIGHT) | 15 |
| | 23W ENERGY SAVING LAMP LONGARMED SPOTLIGHT (YELLOW LIGHT) | 15 |
| | 700W x 700D x 750H MEETING TABLE | 5 |
| | BLACK LEATHER CHAIR | 15 |
| | CEILING BEAM | 15M |
| | 500W SOCKET | 5 |
| | RUBBISH BIN & CARPET (45sqm.) | |

45 Sq.m. Odd Size Standard Booth (A)

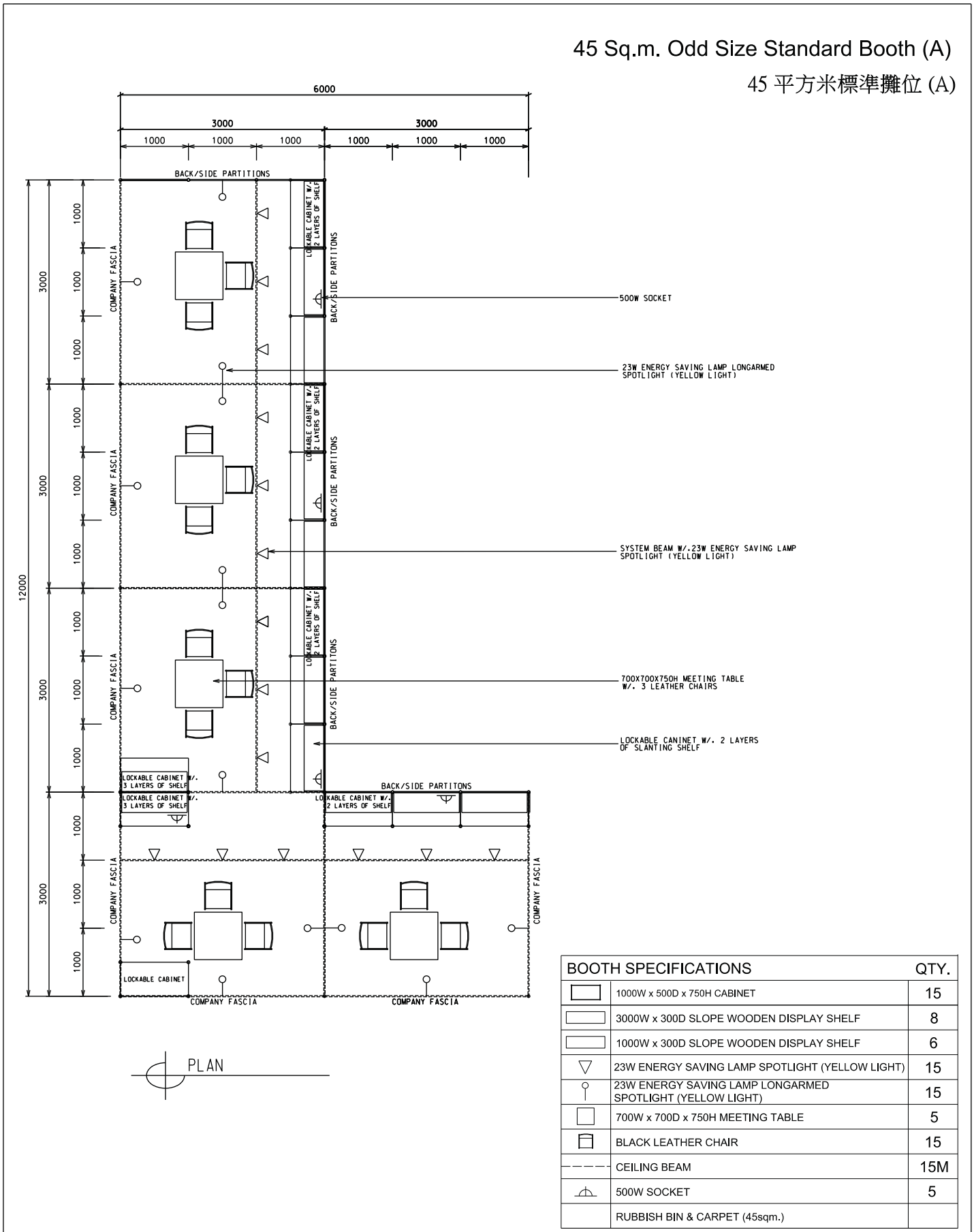
45平方米標準攤位 (A)



| BOOTH SPECIFICATIONS | | QTY. |
|----------------------|---|------|
| | 1000W x 500D x 750H CABINET | 15 |
| | 3000W x 300D SLOPE WOODEN DISPLAY SHELF | 6 |
| | 1000W x 300D SLOPE WOODEN DISPLAY SHELF | 12 |
| | 23W ENERGY SAVING LAMP SPOTLIGHT(YELLOW LIGHT) | 15 |
| | 23W ENERGY SAVING LAMP LONGARMED SPOTLIGHT (YELLOW LIGHT) | 15 |
| | 700W x 700D x 750H MEETING TABLE | 5 |
| | BLACK LEATHER CHAIR | 15 |
| | CEILING BEAM | 15M |
| | 500W SOCKET | 5 |
| | RUBBISH BIN & CARPET (45sqm.) | |

45 Sq.m. Odd Size Standard Booth (A)

45 平方米標準攤位 (A)



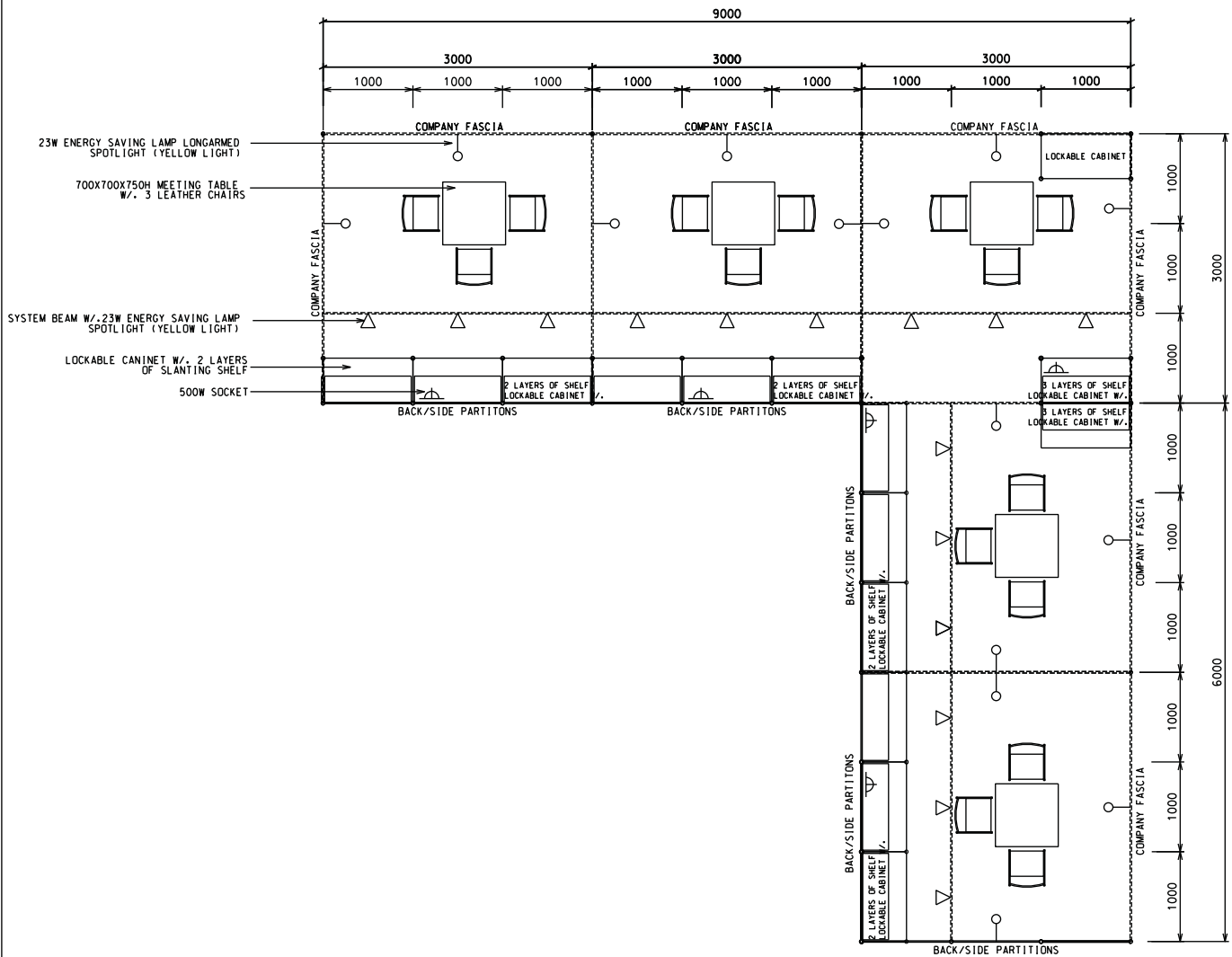
| BOOTH SPECIFICATIONS | | QTY. |
|----------------------|---|------|
| | 1000W x 500D x 750H CABINET | 15 |
| | 3000W x 300D SLOPE WOODEN DISPLAY SHELF | 8 |
| | 1000W x 300D SLOPE WOODEN DISPLAY SHELF | 6 |
| | 23W ENERGY SAVING LAMP SPOTLIGHT (YELLOW LIGHT) | 15 |
| | 23W ENERGY SAVING LAMP LONGARMED SPOTLIGHT (YELLOW LIGHT) | 15 |
| | 700W x 700D x 750H MEETING TABLE | 5 |
| | BLACK LEATHER CHAIR | 15 |
| | CEILING BEAM | 15M |
| | 500W SOCKET | 5 |
| | RUBBISH BIN & CARPET (45sqm.) | |

*The Hong Kong Trade Development Council reserves the right to change the configuration if necessary.

如有需要，香港貿易發展局有權更改攤位結構。

45 Sq.m. Odd Size Standard Booth (A)

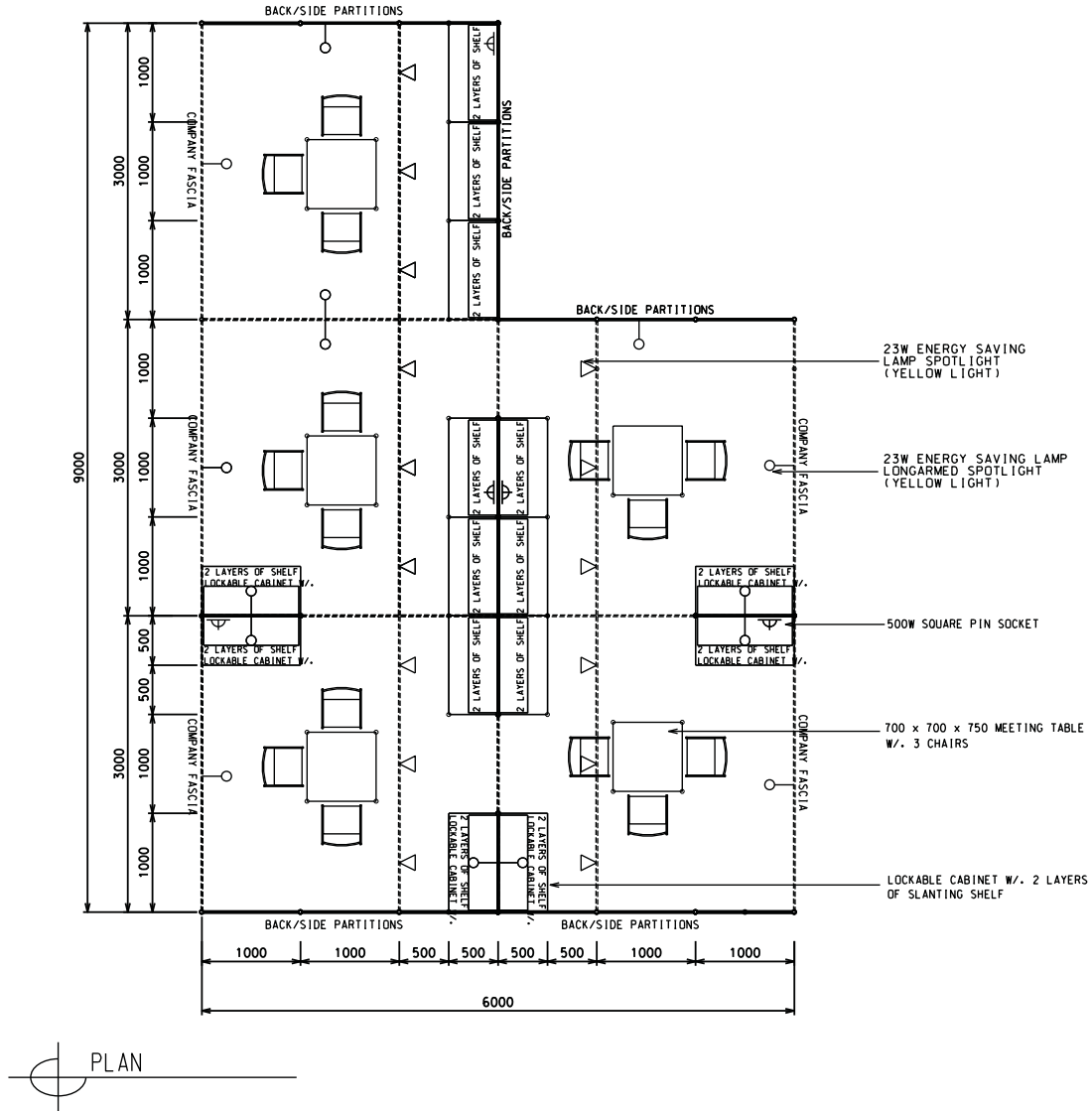
45 平方米標準攤位 (A)



| BOOTH SPECIFICATIONS | | QTY. |
|----------------------|---|------|
| | 1000W x 500D x 750H CABINET | 15 |
| | 3000W x 300D SLOPE WOODEN DISPLAY SHELF | 8 |
| | 1000W x 300D SLOPE WOODEN DISPLAY SHELF | 6 |
| | 23W ENERGY SAVING LAMP SPOTLIGHT (YELLOW LIGHT) | 15 |
| | 23W ENERGY SAVING LAMP LONGARMED SPOTLIGHT (YELLOW LIGHT) | 15 |
| | 700W x 700D x 750H MEETING TABLE | 5 |
| | BLACK LEATHER CHAIR | 15 |
| | CEILING BEAM | 15M |
| | 500W SOCKET | 5 |
| | RUBBISH BIN & CARPET (45sqm.) | |

45 Sq.m. Odd Size Standard Booth (A)

45平方米標準攤位 (A)

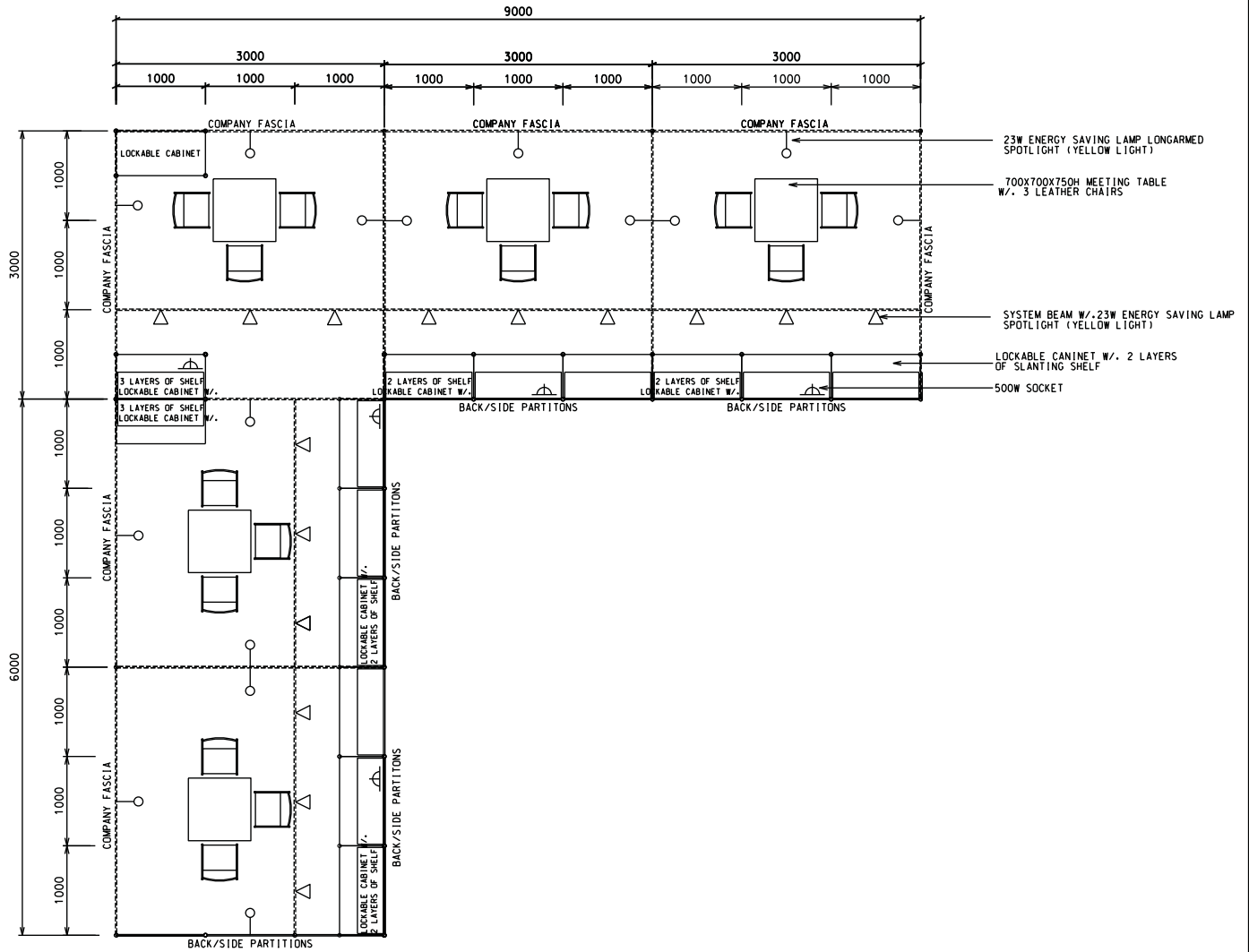


| BOOTH SPECIFICATIONS | | QTY. |
|----------------------|---|------|
| | 1000W x 500D x 750H CABINET | 15 |
| | 3000W x 300D SLOPE WOODEN DISPLAY SHELF | 6 |
| | 10000W x 300D SLOPE WOODEN DISPLAY SHELF | 12 |
| | 23W ENERGY SAVING LAMP SPOTLIGHT(YELLOW LIGHT) | 15 |
| | 23W ENERGY SAVING LAMP LONGARMED SPOTLIGHT (YELLOW LIGHT) | 15 |
| | 700W x 700D x 750H MEETING TABLE | 5 |
| | BLACK LEATHER CHAIR | 15 |
| | CEILING BEAM | 15M |
| | 500W SOCKET | 5 |
| | RUBBISH BIN & CARPET (45sqm.) | |

*The Hong Kong Trade Development Council reserves the right to change the configuration if necessary.

45 Sq.m. Odd Size Standard Booth (A)

45 平方米標準攤位 (A)

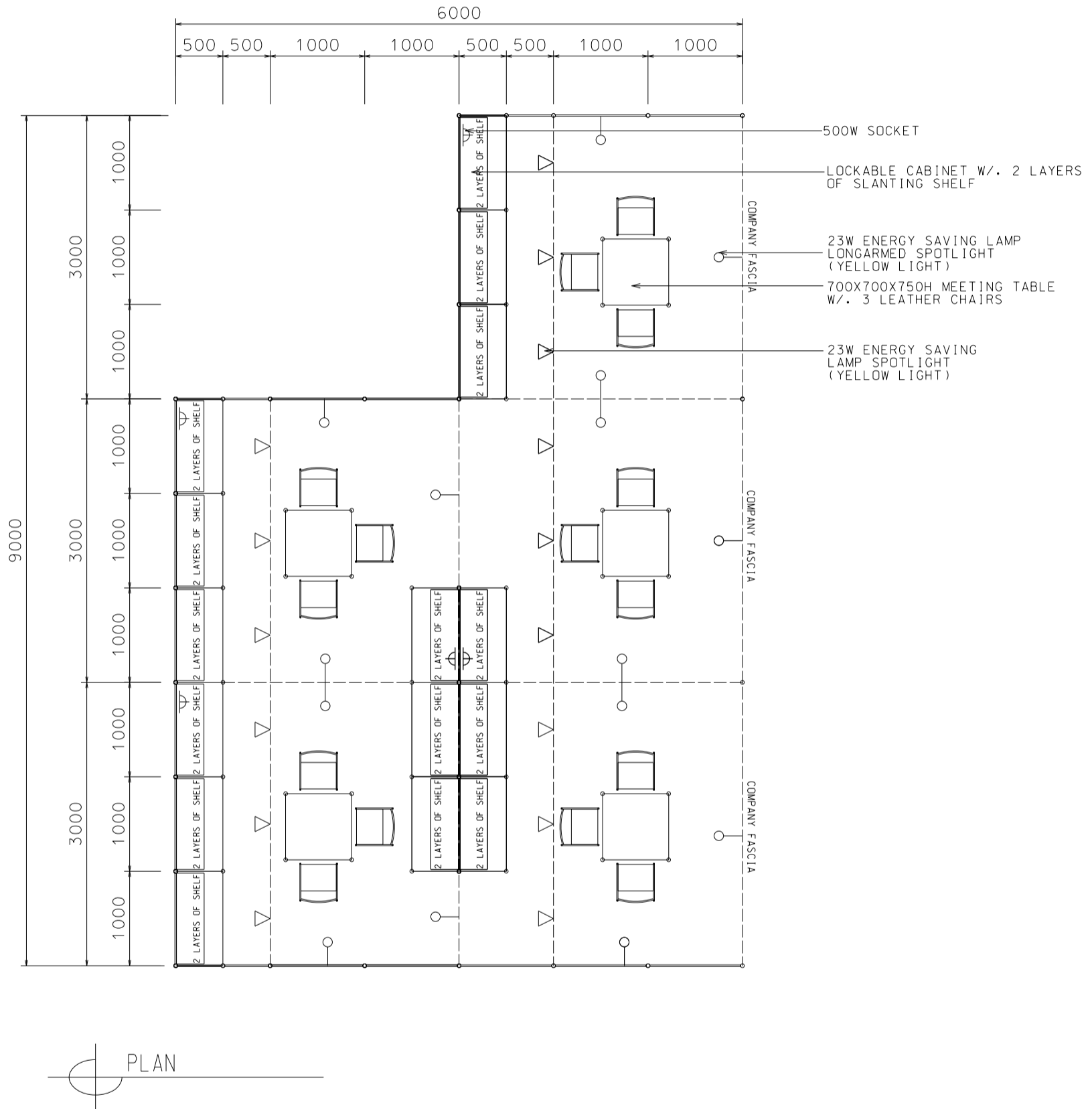


| BOOTH SPECIFICATIONS | | QTY. |
|-------------------------------|---|------|
| | 1000W x 500D x 750H CABINET | 15 |
| | 3000W x 300D SLOPE WOODEN DISPLAY SHELF | 8 |
| | 1000W x 300D SLOPE WOODEN DISPLAY SHELF | 6 |
| | 23W ENERGY SAVING LAMP SPOTLIGHT (YELLOW LIGHT) | 15 |
| | 23W ENERGY SAVING LAMP LONGARMED SPOTLIGHT (YELLOW LIGHT) | 15 |
| | 700W x 700D x 750H MEETING TABLE | 5 |
| | BLACK LEATHER CHAIR | 15 |
| | CEILING BEAM | 15M |
| | 500W SOCKET | 5 |
| RUBBISH BIN & CARPET (45sqm.) | | |

Type1 (M)

45 Sq.m. Odd Size Standard Booth (A)

45平方米標準攤位 (A)



| BOOTH SPECIFICATIONS | | QTY. |
|----------------------|---|------|
| | 1000W x 500D x 750H CABINET | 15 |
| | 3000W x 300D SLOPE WOODEN DISPLAY SHELF | 10 |
| | 23W ENERGY SAVING LAMP SPOTLIGHT(YELLOW LIGHT) | 15 |
| | 23W ENERGY SAVING LAMP LONGARMED SPOTLIGHT (YELLOW LIGHT) | 15 |
| | 700W x 700D x 750H MEETING TABLE | 5 |
| | BLACK LEATHER CHAIR | 15 |
| | CEILING BEAM | 27M |
| | 500W SOCKET | 5 |
| | RUBBISH BIN & CARPET (45sqm.) | |

*The Hong Kong Trade Development Council reserves the right to change the configuration if necessary.

*如有需要，香港貿易發展局有權更改攤位結構。